

Shirlock Road, NW3

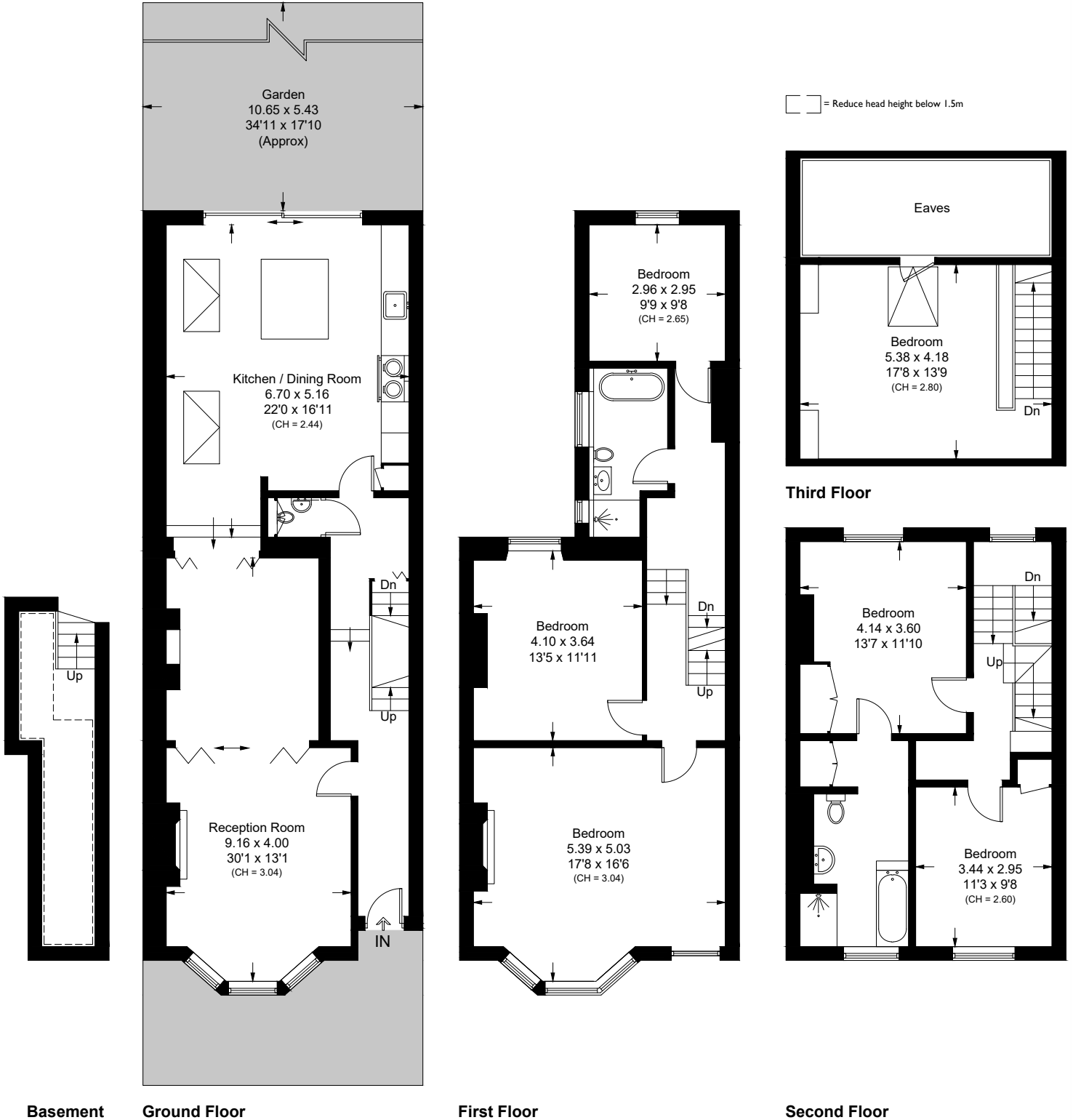
Approximate Area = 222.5 sq m / 2395 sq ft

Basement = 9.6 sq m / 103 sq ft

(Including Limited Use Area)

Eaves = 11.7 sq m / 126 sq ft

Total = 243.8 sq m / 2624 sq ft



Surveyed and drawn in accordance with the International property measurements standards (IPMS 2: Residential) Not drawn to scale unless stated.

Whilst every care is taken in the preparation of this plan, please check all dimensions, shapes and compass bearings before making any decisions reliant upon them.