

Fitzroy Park, N6

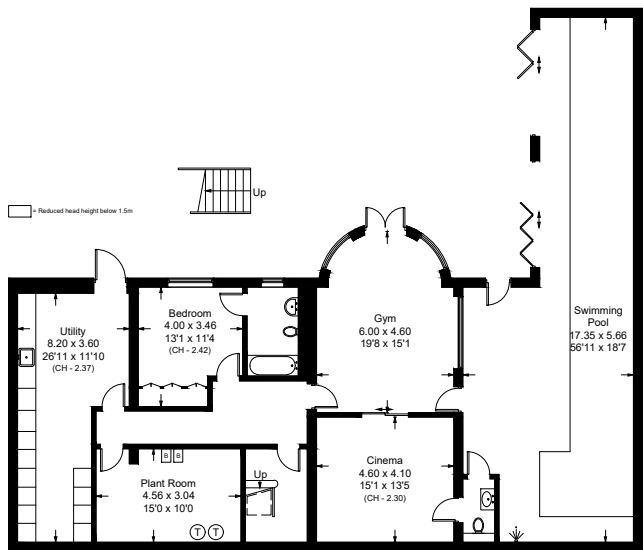
Approximate Area = 568.5 sq m / 6119 sq ft

Pool Plant Room = 5.6 sq m / 60 sq ft

Total = 574.1 sq m / 6179 sq ft

Including Limited Use Area (6.4 sq m / 69 sq ft)

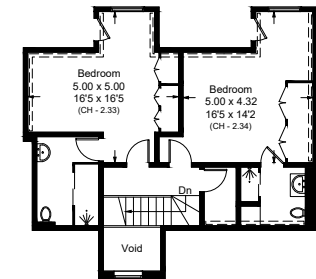
(Excluding Void)



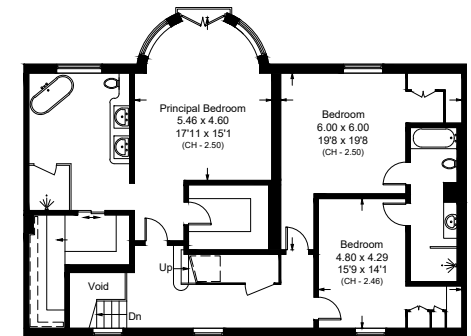
Lower Ground Floor



Ground Floor



Second Floor



First Floor

Surveyed and drawn in accordance with the International property measurements standards (IPMS 2: Residential) Not drawn to scale unless stated. Whilst every care is taken in the preparation of this plan, please check all dimensions, shapes and compass bearings before making any decisions reliant upon them.