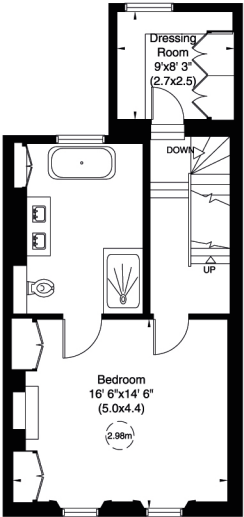
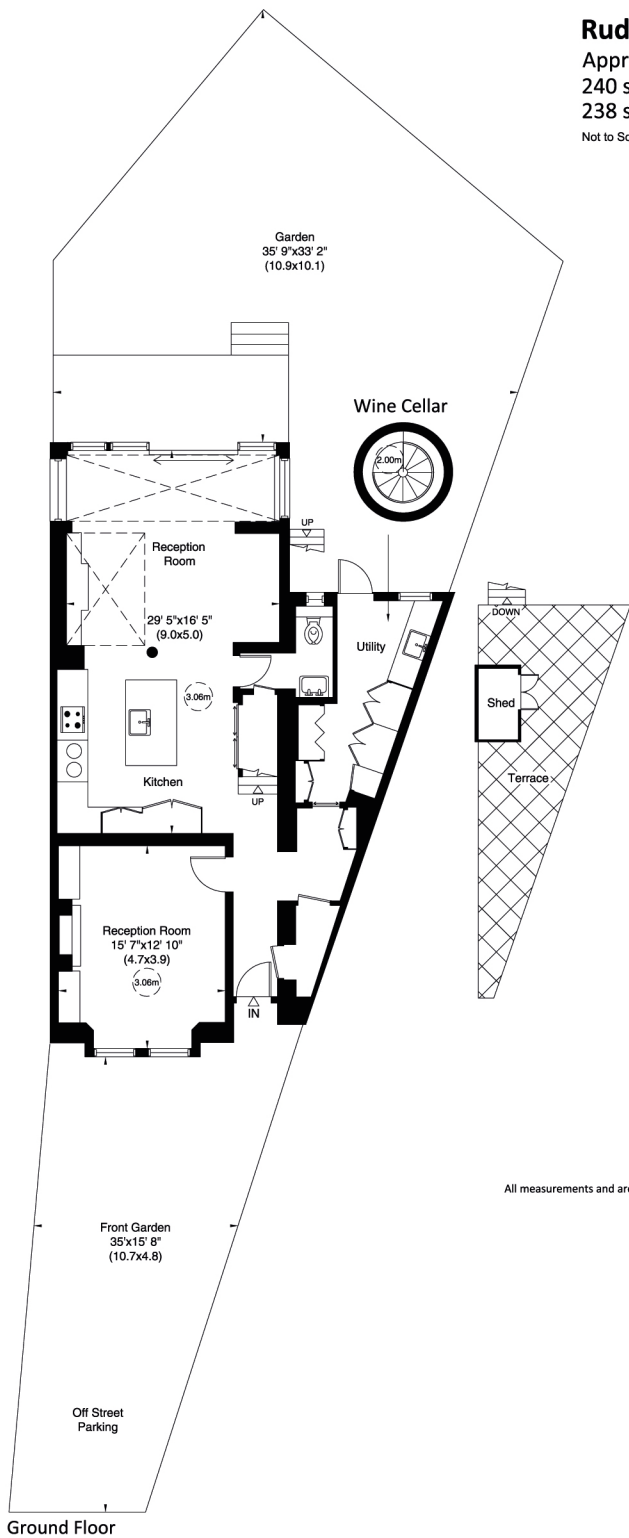
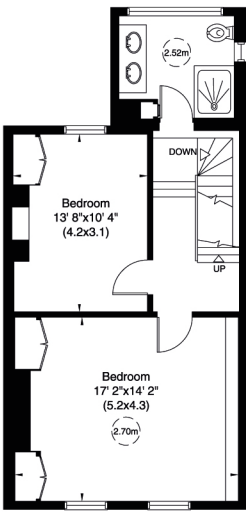


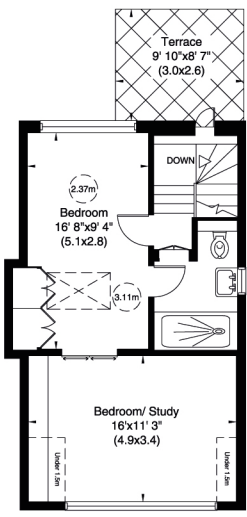
**Rudall Crescent, NW3**  
Approximate Gross Internal Area  
240 sq m/ 2579 sq ft Including Under 1.5m  
238 sq m/ 2558 sq ft Excluding Under 1.5m  
Not to Scale, for identification only



First Floor



Second Floor



Third Floor

For guidance only and must not be relied upon as a statement of fact or used for valuation purposes.  
All measurements and areas are approximate only (and have been prepared in accordance with the current edition of the RICS Code of Measuring Practice).

