

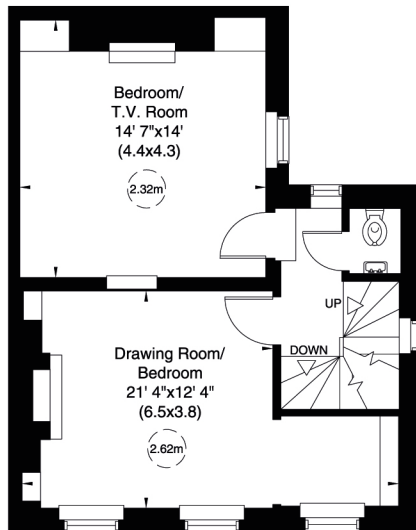
# Hampstead Square, NW3

Approximate Gross Internal Area

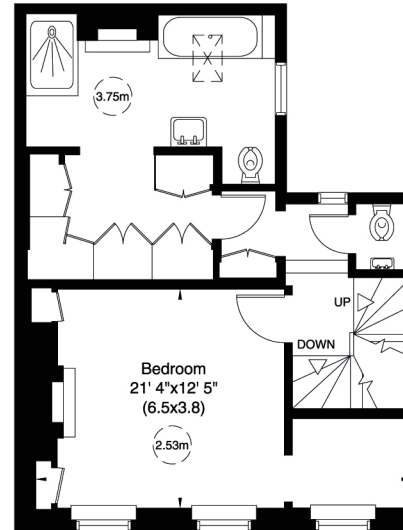
252 sq m/ 2718 sq ft Including Under 1.5m and Under Eaves

240 sq m/ 2584 sq ft Excluding Under 1.5m and Under Eaves

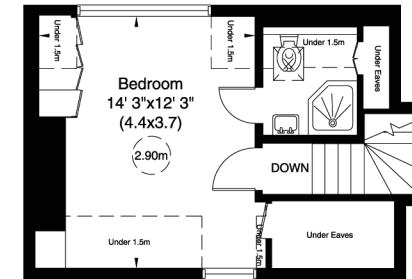
Not to Scale, for identification only



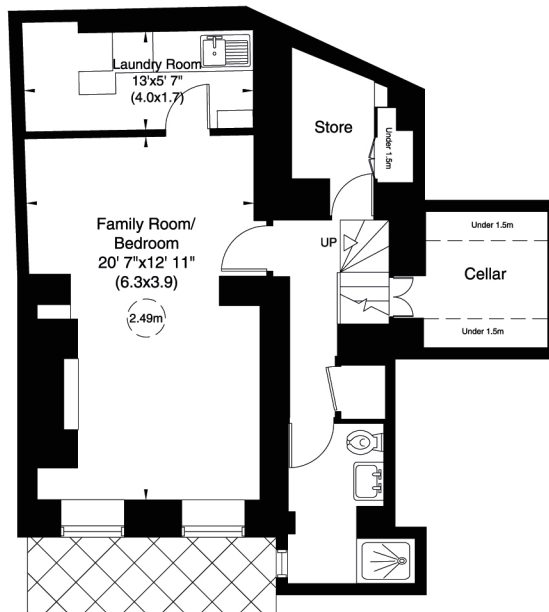
First Floor



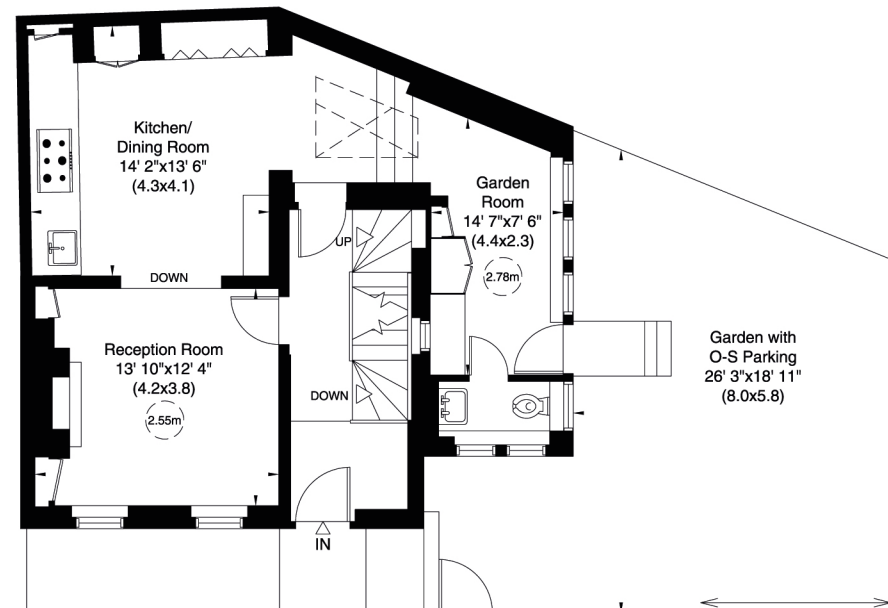
Second Floor



Third Floor



Lower Ground Floor



Ground Floor

For guidance only and must not be relied upon as a statement of fact.

All measurements and areas are approximate only (and have been prepared in accordance with the current edition of the RICS Code of Measuring Practice).

