



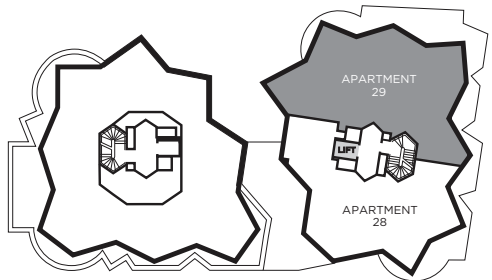
KEY

- FW FITTED WARDROBE
- W/D WASHER/DRYER
- C CUPBOARD
- HEC HEATING, ELECTRICAL COMPONENTS
- C/C COMFORT COOLING

DIMENSIONS

TOTAL AREA	168.33 sq m	1811 sq ft
LIVING/DINING	6483mm x 9850mm	21'3" x 32'3"
KITCHEN	2712mm x 5750mm	8'9" x 18'9"
MASTER BEDROOM	5385mm x 4673mm	17'7" x 15'3"
DRESSING ROOM	1826mm x 4285mm	6'0" x 14'1"
EN-SUITE	3115mm x 2115mm	10'2" x 6'9"
BEDROOM	3823mm x 5260mm	13'5" x 17'3"
BATHROOM	2595mm x 3022mm	8'5" x 9'9"
LIBRARY	4450mm x 2700mm	14'6" x 8'9"

FIFTH FLOOR PLAN



LOCATION PLAN

