

Rudall Crescent, NW3

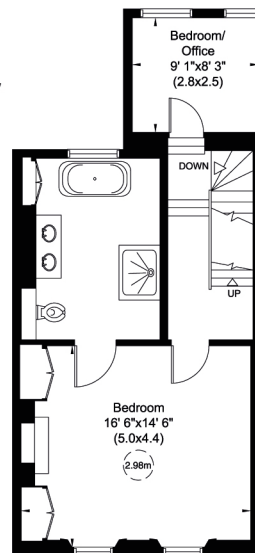
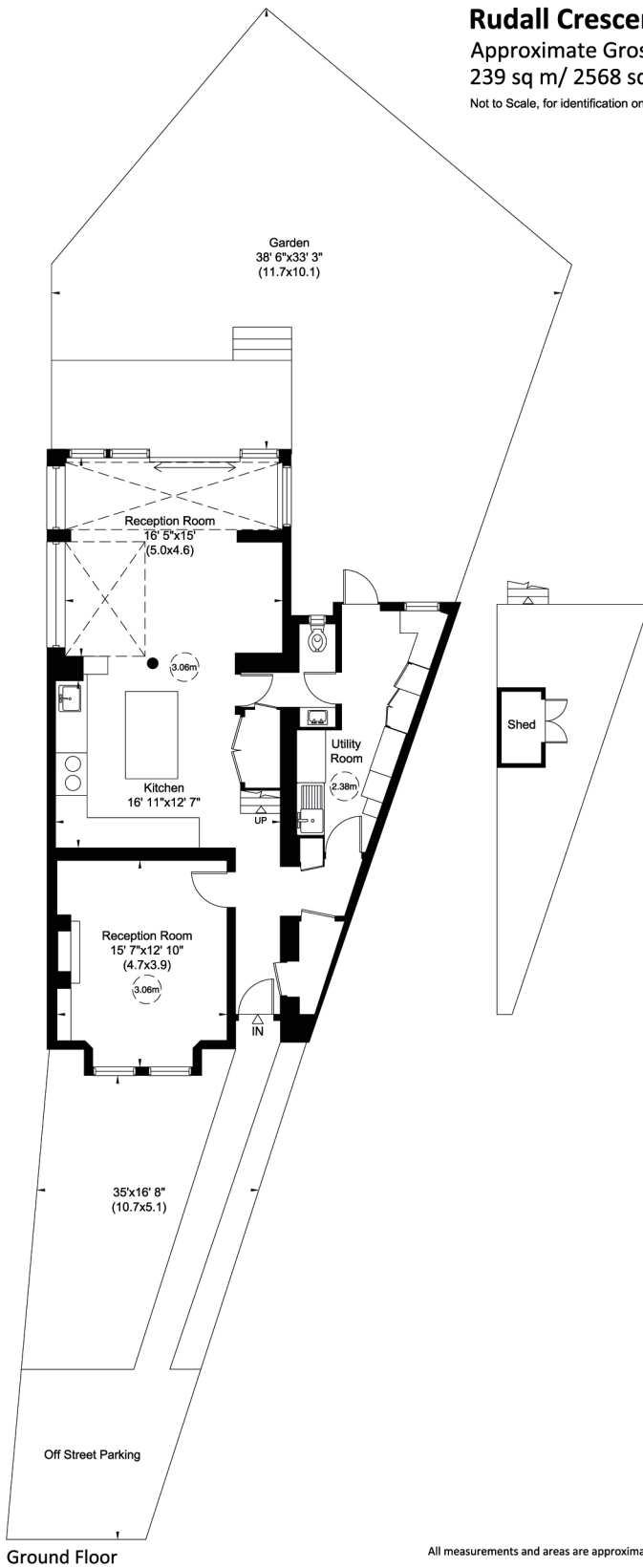
Approximate Gross Internal Area

239 sq m/ 2568 sq ft Including Under 1.5m

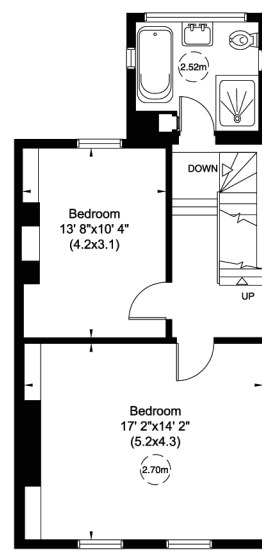
Not to Scale, for identification only



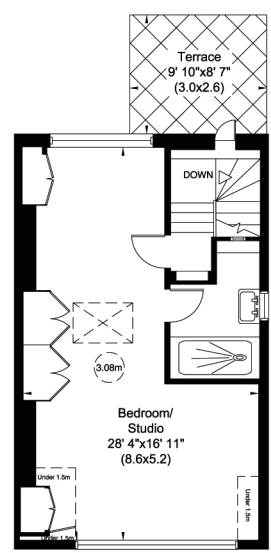
Reduced head height below 1.5m



First Floor



Second Floor



Third Floor

For guidance only and must not be relied upon as a statement of fact.
All measurements and areas are approximate only (and have been prepared in accordance with the current edition of the RICS Code of Measuring Practice).

