



LYNDHURST TERRACE **HAMPSTEAD, NW3**



This exquisite architect designed maisonette forms part of this Victorian residence and has been refurbished to an exacting standard. The property has unique elements that create a sophisticated contemporary home whilst retaining many original period features. Extending to approximately 3,600 sq.ft, this wonderful home is arranged over two floors and benefits from high ceilings throughout. The private rear garden is directly accessed from the open plan kitchen/ dining space.

ACCOMMODATION & AMENITIES

FULLY FITTED KITCHEN, THREE RECEPTION ROOMS, FIVE BEDROOMS, FOUR BATHROOMS, PRIVATE GARDENS, EPC: E

GUIDE PRICE £4,999,999

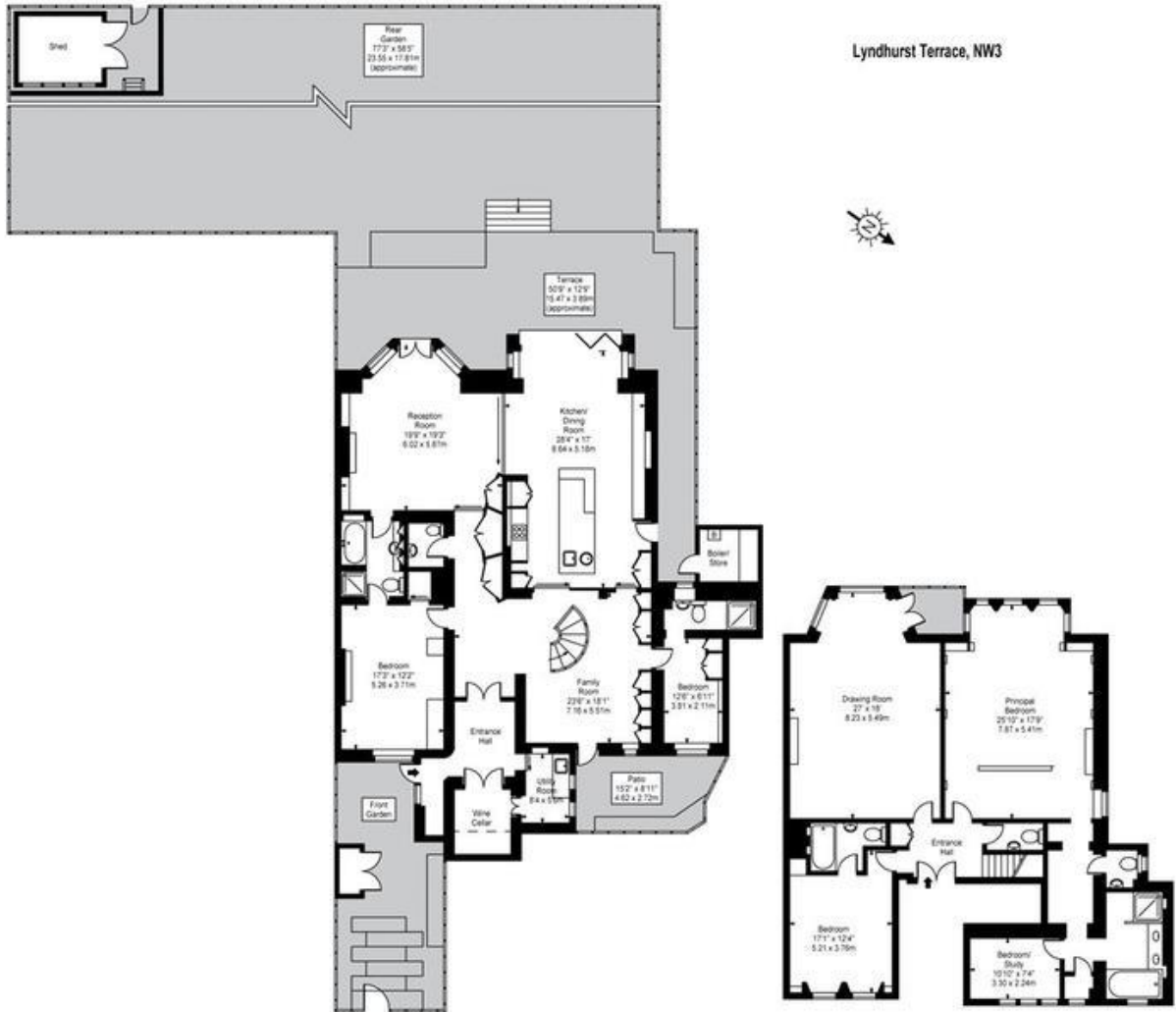
JOINT SOLE AGENTS

LEASEHOLD





Lyndhurst Terrace, NW3



Lower Ground Floor

Ground Floor

Approx Gross Internal Area **3563 Sq Ft - 331.44 Sq M**

Approx Floor Area Including Restricted Heights & Boiler/Store **3641 Sq Ft - 338.69 Sq M**

(Including Shed)

For Illustration Purposes Only - Not To Scale Floor Plan by www.nogaphotostudio.com Ref. No 29652

This floor plan should be used as a general guide for guidance only. Any intended purchase or lease should be verified by inspection, enquiries, enquiries and/or survey with the competence of a professional. Any areas, measurements, or dimensions quoted are approximate and should not be used to value a property or be the basis of any claim or suit.

