



RESIDENTIAL SALES & ACQUISITIONS

BELSIZE GROVE BELSIZE PARK NW3

A beautiful presented stucco fronted Grade II listed terraced house, which forms part of a Georgian terrace dating back to the 1820's. This is an extremely rare opportunity to buy one of only a handful of these delightful homes, formerly known as Haverstock Terrace; it is uniquely the only terrace of this period in Belsize Park.

The property, which still retains a plethora of original features, is set back from the road protected by a wall and a deep front garden, has been meticulously restored, extended and totally refurbished by the current owners.

Arranged over four floors the house extends to approximately 2,900 square feet of bright and spacious accommodation. In addition, the house benefits from a 85' South East facing private terrace and garden.

Belsize Grove is located off Haverstock Hill, a short walk and conveniently located for numerous local schools, shops, restaurants and transport facilities on offer.



ACCOMMODATION & AMENITIES

ENTRANCE HALL, DRAWING ROOM, RECEPTION ROOM, FAMILY ROOM, HAND CRAFTED SHAKER STYLE KITCHEN/DINING ROOM, GUEST WC, UTILITY ROOM, FIVE BEDROOMS, LARGE FAMILY BATHROOM, SHOWER ROOM. ACCESS TO THE SOUTH EAST FACING GARDEN IS VIA THE GROUND FLOOR AND FROM THE RAISED TERRACE, 39' FRONT GARDEN, AMPLE STORAGE, CA-B RESIDENTS PARKING.

Drawing Room



Reception Room



TV Room



Kitchen Breakfast Room



Dining Area



Master Bedroom





TERMS

TENURE

Freehold

GUIDE PRICE

£4,750,000 **Subject to Contract**

Belize Grove, NW3

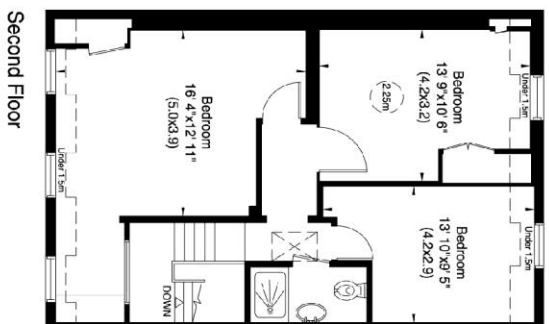
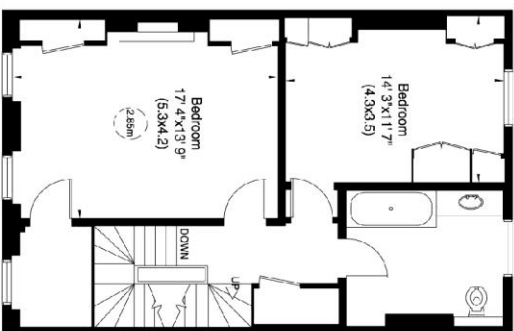
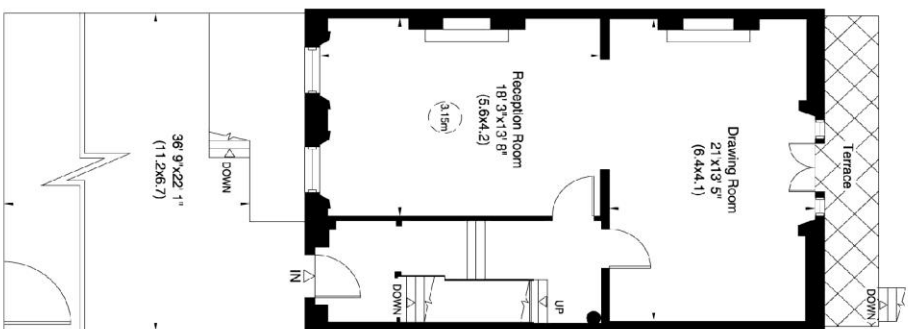
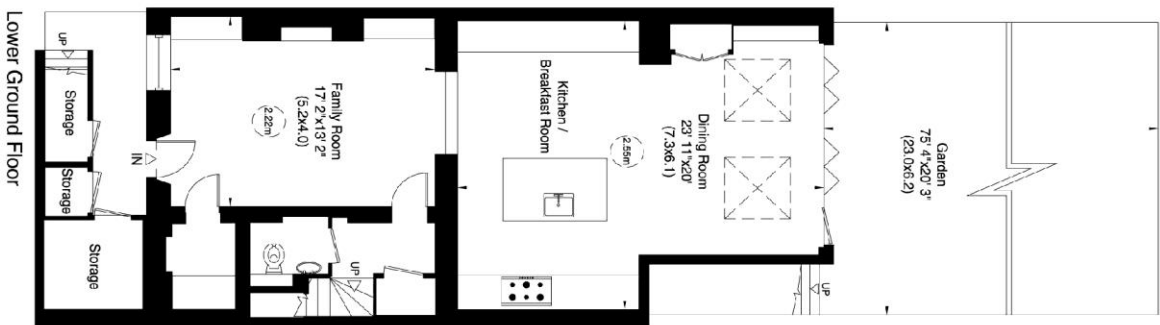
Gross internal area (approx.)

268 Sq m (2886 Sq ft) Including Under 1.5m and Storage's

257 Sq m (2767 Sq ft) Excluding Under 1.5m and Storage's

For identification only. Not to Scale

Floor Plan by **capital group** 020 8671 7722



Not to scale, for guidance only and must not be relied upon as a statement of fact. All measurements and areas are approximate only (and have been prepared in accordance with the current edition of the RICS Code of Measuring Practice).