



VILLA DORIA  
HEATH DRIVE  
NW3





## A MAGNIFICENT SEVEN BEDROOM, DETACHED AMBASSADORIAL RESIDENCE.

Set back from the road behind a 170' frontage, this stunning property of 6,400 square feet (596 square metres) comprises bright and spacious accommodation predominantly arranged over three floors. The house includes a stunning, modern library which could easily be self-contained. The house sits within mature, landscaped gardens which include a large level south west-facing lawn, a formal sunken garden and several al fresco dining and seating areas.



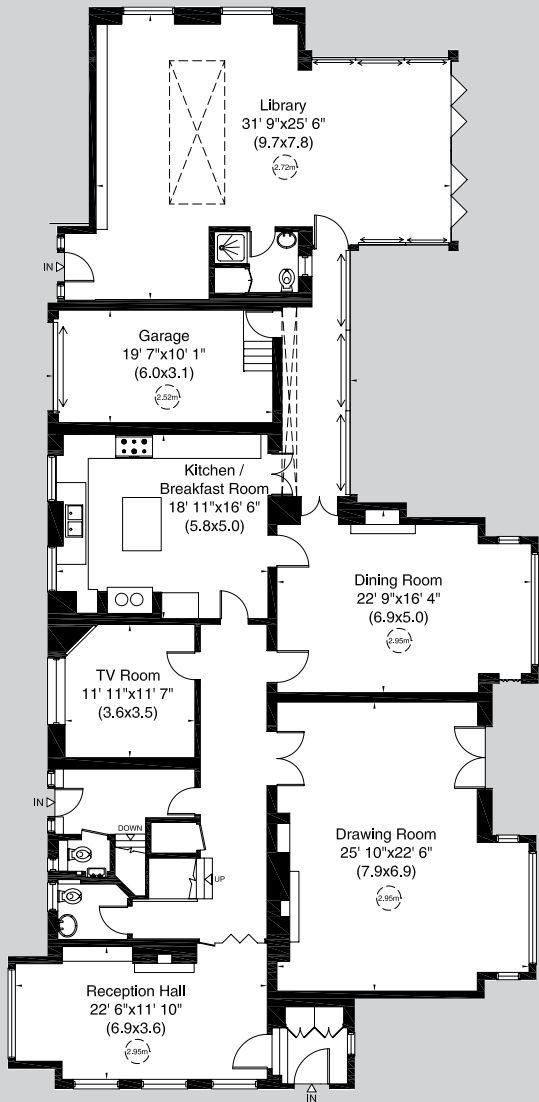
To the front of the house is a sweeping gated carriage drive with parking for 6 to 7 vehicles and to the side of the house, there is additional secure off street parking leading to an integral garage. The house is situated in a favoured location within walking distance of Hampstead Village, the many local schools and numerous transport links into Central London.

#### ACCOMMODATION & AMENITIES

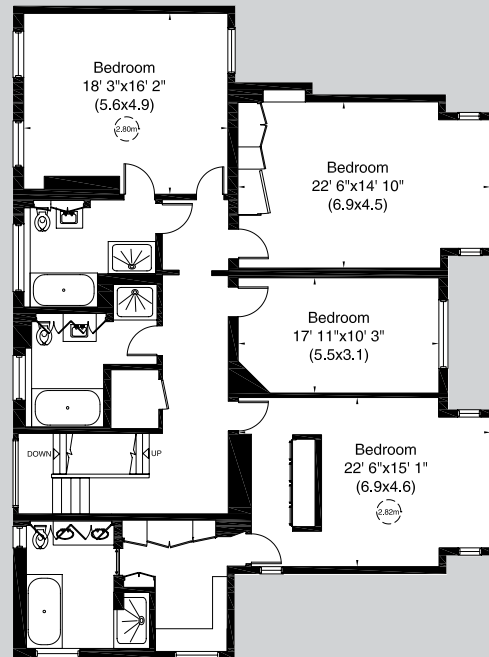
Drawing Room • Dining Room • TV Room • Reception • Hall • Inner Hallway • Kitchen/ Breakfast Room • Library with Separate Entrance and en-suite Shower Room • Vestibule Coat Cupboards • Guest WC • Master Suite comprising Bedroom, Dressing Room & Bathroom • Six further Bedrooms (Two with en-suite bathrooms) • Family Bathroom • Family Shower Room • Utility Room • Boiler Room • Wine Cellar • Integral Garage • 117' X 66' South West Facing Rear Garden • Gardener's WC • Gated Carriage Drive providing Off Street Parking for 6 to 7 Vehicles •



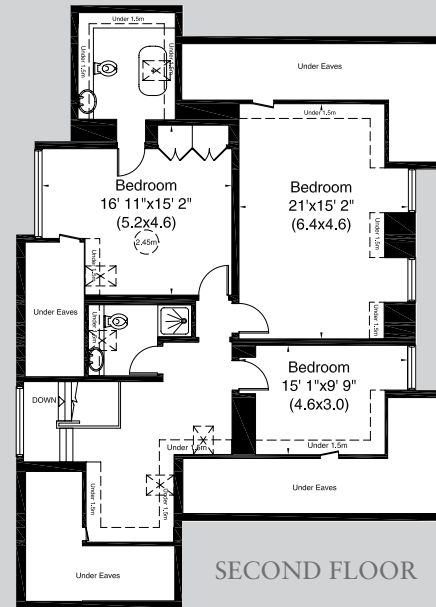
Gross Internal Area (Approx.)  
 684 sq m (7,362 sq ft)  
 Including 1.5m Under Eaves and Loft  
 596 sq m (6,411 sq ft)  
 Excluding 1.5m Under Eaves and Loft



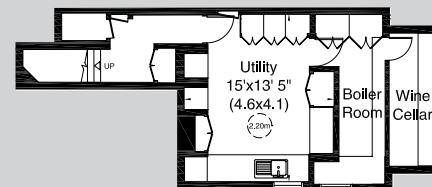
GROUND FLOOR



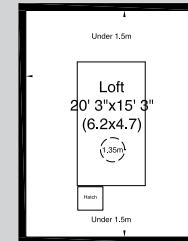
FIRST FLOOR



SECOND FLOOR



BASEMENT



TERMS

PRICE ON APPLICATION  
 SOLE SELLING AGENT  
 FREEHOLD



RESIDENTIAL SALES & ACQUISITIONS

020 7431 0000

28 Church Row, Hampstead, London NW3 6UP  
 email: info@marcusparfitt.com www.marcusparfitt.com

Misrepresentation Act 1967. This brochure and the descriptions and measurements herein do not constitute representation and whilst every effort has been made to ensure accuracy, this cannot be guaranteed. 289249