



CHRISTCHURCH HILL

HAMPSTEAD, NW3



CHRISTCHURCH HILL

HAMPSTEAD, NW3

Behind the façade of this late Victorian terrace house which faces and has uninterrupted views over Hampstead Heath is an architecture masterpiece.

As you enter the house on the raised ground floor you are greeted with a galleried walkway which overlooks the double volume dining/kitchen/family area. There are four bedrooms served by a large bathroom, a shower room and en suite wet room. The first floor 28' double aspect reception room overlooks the Heath to the front and the Village from a balcony to the rear. Finally there are two separate cloakrooms, a pretty front garden with water feature and a town garden that could also accommodate a small car behind secure electric gates.

The property is conveniently located in the heart of Hampstead village, between the many boutiques and charming restaurants of Hampstead High Street and the green open spaces of Hampstead Heath. For transport Hampstead Underground Station (Northern Line) is close by and Hampstead Heath Overground Station is approximately 500 metres away





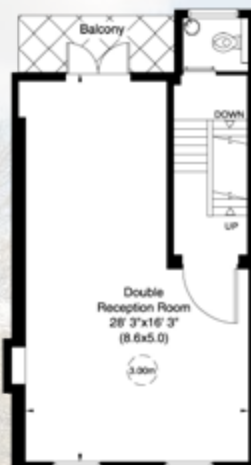
APPROXIMATE GROSS INTERNAL AREA
212 SQ_M (2,281 SQ_FT) INCLUDING UNDER 1.5M
205 SQ_M (2,209 SQ_FT) EXCLUDING UNDER 1.5M



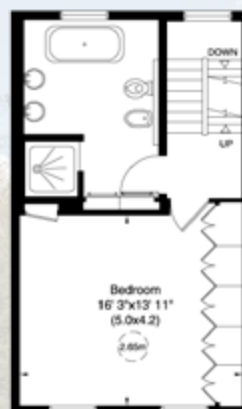
Lower Ground Floor



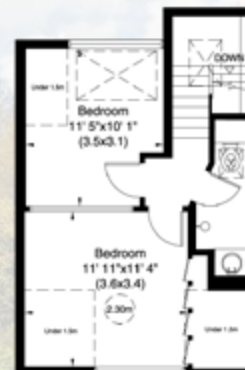
Ground Floor



First Floor



Second Floor



Third Floor



ACCOMMODATION & AMENITIES

GALLERIED ENTRANCE HALL • GUEST CLOAKROOM
KITCHEN BREAKFAST ROOM • DOUBLE VOLUME DINING/
FAMILY ROOM • UTILITY ROOM • 28' DOUBLE RECEPTION
ROOM WITH FANTASTIC HEATH VIEWS • 4 BEDROOMS
FAMILY BATHROOM • WET ROOM • EN SUITE WET ROOM
TO (BEDROOM 4/STUDY) • WALLED REAR GARDEN/
POTENTIAL OSP • FRONT GARDEN WITH A JAPANESE
INSPIRED WATER FEATURE • EER E 41

GUIDE PRICE £4,500,000

FREEHOLD

LONDON BOROUGH OF CAMDEN

SOLE SELLING AGENTS

**MARCUS
PARFITT**

RESIDENTIAL SALES & ACQUISITIONS

020 7431 0000

28 Church Row, Hampstead, London NW3 6UP
email: info@marcusparfitt.com www.marcusparfitt.com

