



STORMONT ROAD, **KENWOOD, N6**



An immaculate, newly restored and brilliantly finished double fronted detached house with a 136' west facing garden, set behind a carriage drive and electronically operated gates.

This substantial mansion comprising circa 9000 square feet provides in addition to an abundance of entertaining and bedroom accommodation on the three principle floors, a magnificent leisure area.

The house is located within 50m of the rolling green acres of Kenwood. Highgate tube station is approximately 1250m away and East Finchley tube station is within 1500m. Additionally the house is very convenient for all of the main London Airports.

GUIDE PRICE £11,750,000

MAIN AGENT

FREEHOLD

ACCOMMODATION

GRAND ENTRANCE HALL, GUEST WC, COAT CUPBOARD, DOUBLE DRAWING ROOM, KITCHEN/BREAKFAST/FAMILY/ INFORMAL DINING ROOM, STUDY, OFFICE, MASTER BEDROOM WITH DRESSING ROOM AND ENSUITE SEVEN TO EIGHT FURTHER BEDROOMS FIVE FURTHER ENSUITES, FIVE FURTHER WCS, WEST FACING LANDSCAPED GARDEN

AMENITIES

INTEGRATED CRESTRON AV SYSTEM WITH KALEIDESCAPE BLUE-RAY AND CD SERVERS, ALARM SYSTEM, VIDEO ENTRY PHONE, BIOMETRIC FRONT DOOR AND GATE LOCKS, CCTV, AIR CONDITIONING, LUTRON PROGRAMMABLE DIMMABLE LIGHTING SYSTEM, UNDERFLOOR HEATING THROUGHOUT

BESPOKE 2.5 METER TALL AMERICAN BLACK WALNUT FRENCH POLISHED PANELLED DOORS WITH POLISHED CHROME DOOR HANDLES. WIRELESS TOUCHSCREEN REMOTES AND WALL PANELS FOR ALL TV & MUSIC SYSTEMS, 'B & W' SPEAKERS

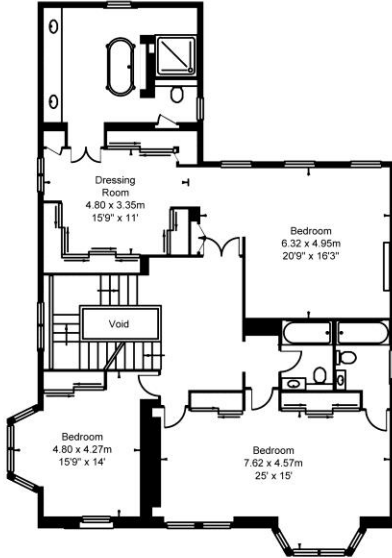
FULL IRRIGATION SYSTEMS AND EXTERIOR LIGHTING IN FRONT AND REAR GARDENS, LEISURE FLOOR WITH CINEMA ROOM, BAR, GYM, SWIMMING POOL, JACUZZI, SAUNA, STEAM ROOM, WINE CELLAR, INTEGRAL GARAGE AND A GATED CARRIAGE DRIVEWAY



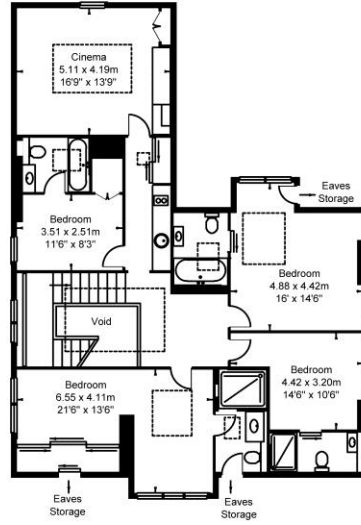




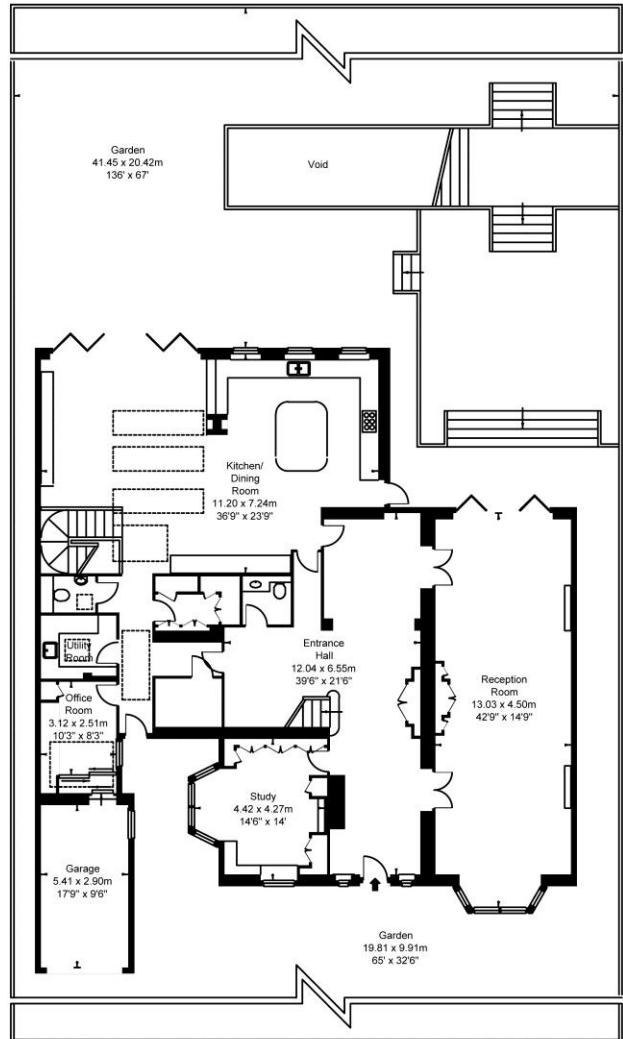
Stormont Road, N6
 Approximate Gross Internal Area
 858.37 sq m / 9240 sq ft
 (Including Garage, Plant Room & Pool House)



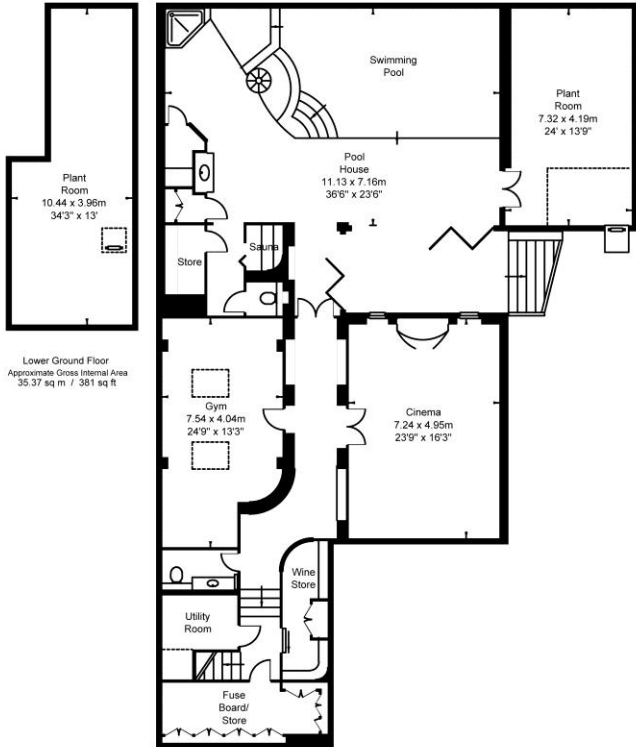
First Floor
 Approximate Gross Internal Area
 167.03 sq m / 1799 sq ft



Second Floor
 Approximate Gross Internal Area
 138.33 sq m / 1489 sq ft



Ground Floor
 Approximate Gross Internal Area
 268.85 sq m / 2894 sq ft



Upper Lower Ground Floor
 Approximate Gross Internal Area
 248.79 sq m / 2678 sq ft

Lower Ground Floor
 Approximate Gross Internal Area
 35.37 sq m / 381 sq ft







