

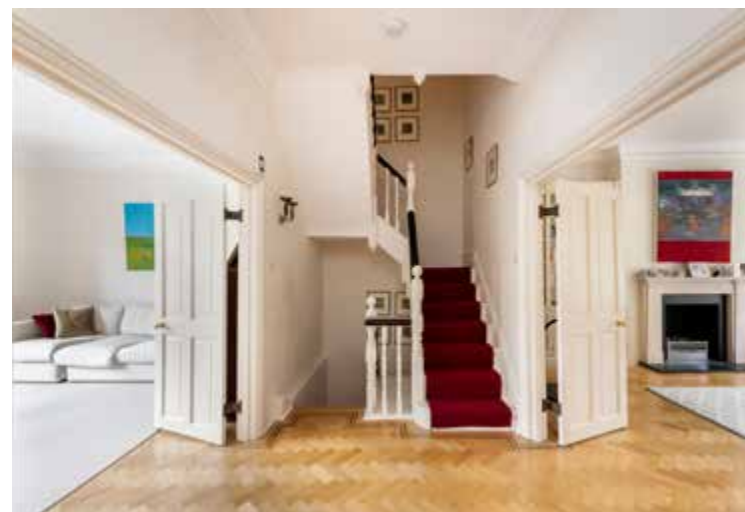


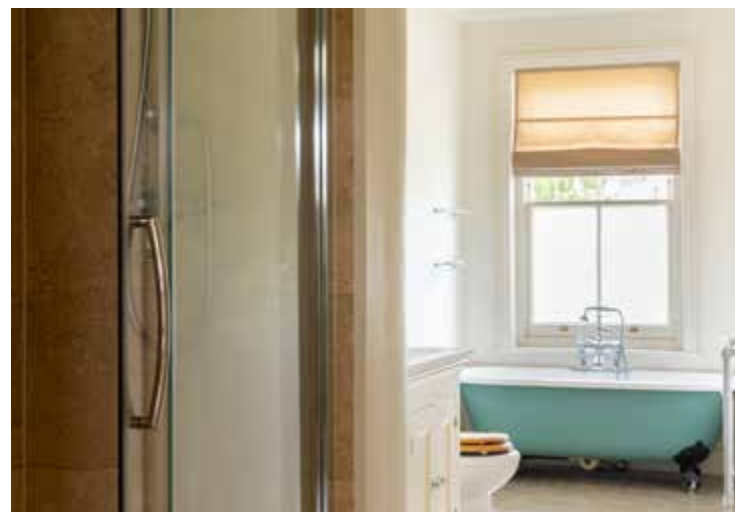
RUDALL CRESCENT
HAMPSTEAD VILLAGE NW3



RUDALL CRESCENT HAMPSTEAD VILLAGE NW3

An immaculately presented mid-terrace, four storey Victorian house offering well planned bright and spacious accommodation over 4 floors. This fantastic family home comprises 4 double bedrooms and features 3 separate reception rooms and a modern kitchen/ breakfast room with a feature, raised and glazed dining area with bi-fold doors opening out onto a paved rear patio and garden. The house is conveniently located in the heart of Hampstead Village within walking distance to the extensive facilities of The Village and moments away from the open expanses of Hampstead Heath.





APPROXIMATE GROSS INTERNAL AREA
248.8 SQ_M (2,678 SQ_FT)

INCLUDING LIMITED USE AREA
4.9 SQ_M (53 SQ_FT)



ACCOMMODATION & AMENITIES

- ENTRANCE HALL • DRAWING ROOM • FAMILY ROOM TV ROOM • KITCHEN/BREAKFAST ROOM WITH A GLAZED DINING AREA • UTILITY ROOM • GUEST CLOAKROOM
- PRINCIPLE BEDROOM WITH EN SUITE BATHROOM
- 3 FURTHER BEDROOMS • FAMILY SHOWER ROOM
- PRIVATE REAR GARDEN • RESIDENTS PARKING

PRICE ON APPLICATION

FREEHOLD

SOLE SELLING AGENTS



RESIDENTIAL SALES & ACQUISITIONS

020 7431 0000

28 Church Row, Hampstead, London NW3 6UP
email: info@marcusparfitt.com www.marcusparfitt.com