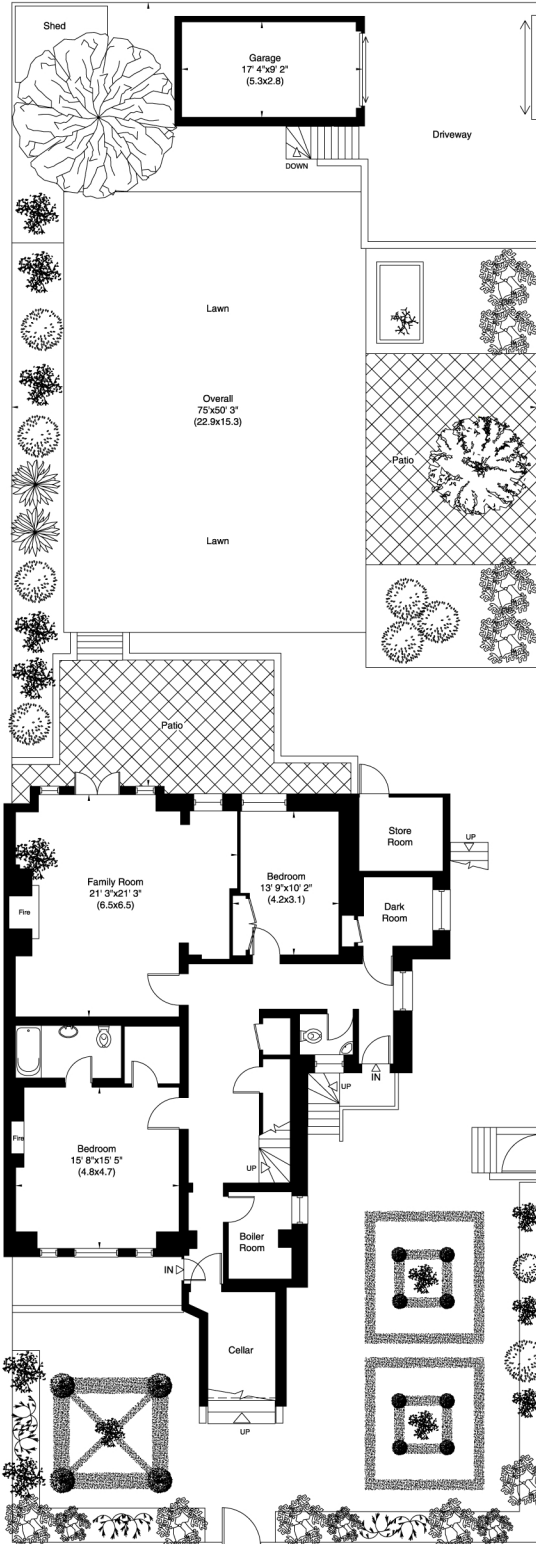


Pond Street, NW3

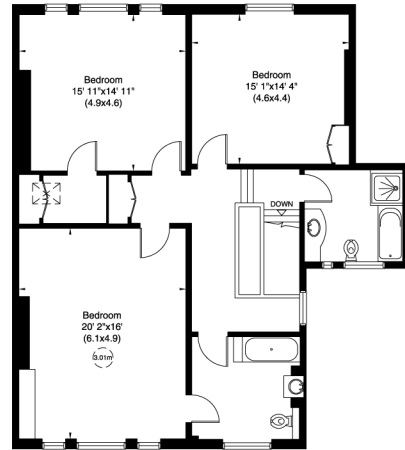
Gross internal area (approx.)
 511 Sq m (5504 Sq ft) Excluding Garage
 0.17 Acre

For identification only, Not to Scale

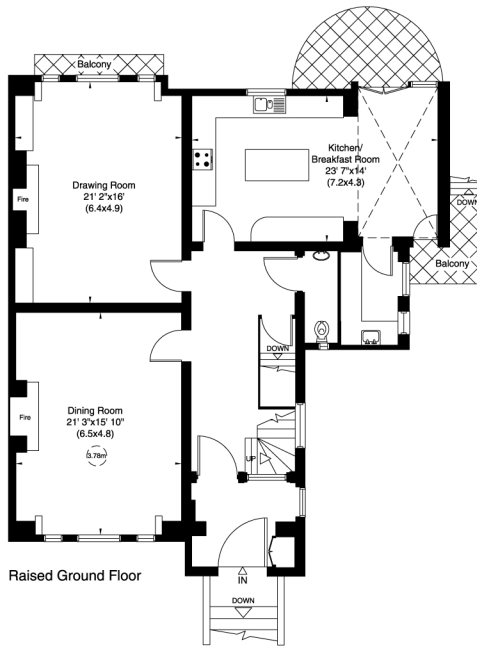
Floor Plan by **capital group** 020 8671 7722



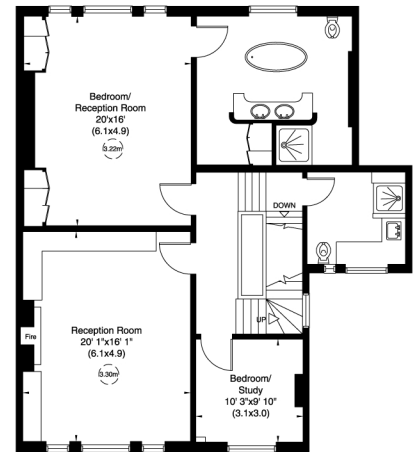
Ground Floor



Second Floor



Raised Ground Floor



First Floor

Not to scale, for guidance only and must not be relied upon as a statement of fact. All measurements and areas are approximate only (and have been prepared in accordance with the current edition of the RICS Code of Measuring Practice).