



## **GOLDHURST TERRACE** **LONDON, NW6**



One of the finest houses to come on the market in the West Hampstead for many years.

An immaculate, totally refurbished and extended bay fronted, semi-detached Edwardian family home, set back from the road behind a gated driveway. This exceptional property has been meticulously refurbished to an exacting standard still retains many period features, comprising approximately 3000 sq ft (278 sq. m.) predominantly over 3 floors.

This wonderful property features three bright interconnecting reception areas and an extended, bespoke designer kitchen/breakfast room which has a wall of floor to ceiling glass doors that open out onto a large Zen inspired rear patio, terrace and garden. The master bedroom has a luxurious en-suite bathroom and his and hers walk in wardrobes, 4 further bedrooms, potentially 2 bathrooms (one is currently used as a utility room). There is a large loft that STPP could easily be converted to make additional accommodation and to the front of the house there is secure gated off street parking for one car.

**GUIDE PRICE £3,750,000**

**SOLE SELLING AGENT**

**FREEHOLD**



## **ACCOMMODATION & AMENITIES**

ENTRANCE HALL, 2 GUEST WC'S, CLOAK CUPBOARD, DRAWING ROOM, DINING ROOM, STUDY, KITCHEN/BREAKFAST ROOM, MASTER BEDROOM WITH ENSUITE BATHROOM & HIS AND HERS WALK IN WARDROBES, BEDROOM TWO/SITTING ROOM, UTILITY ROOM/POTENTIAL BATHROOM, THREE FURTHER DOUBLE BEDROOMS, FAMILY BATHROOM, UTILITY CUPBOARD, LARGE 845 SQ FT LOFT WITH THE POTENTIAL TO EXTEND, GATED OFF STREET PARKING, 74' REAR GARDEN, WINE CELLAR, EER-E

















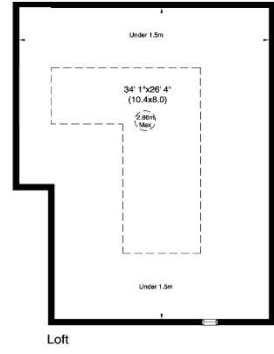
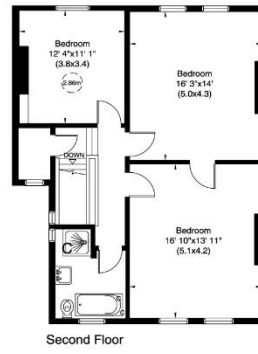
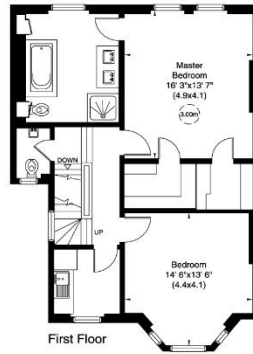
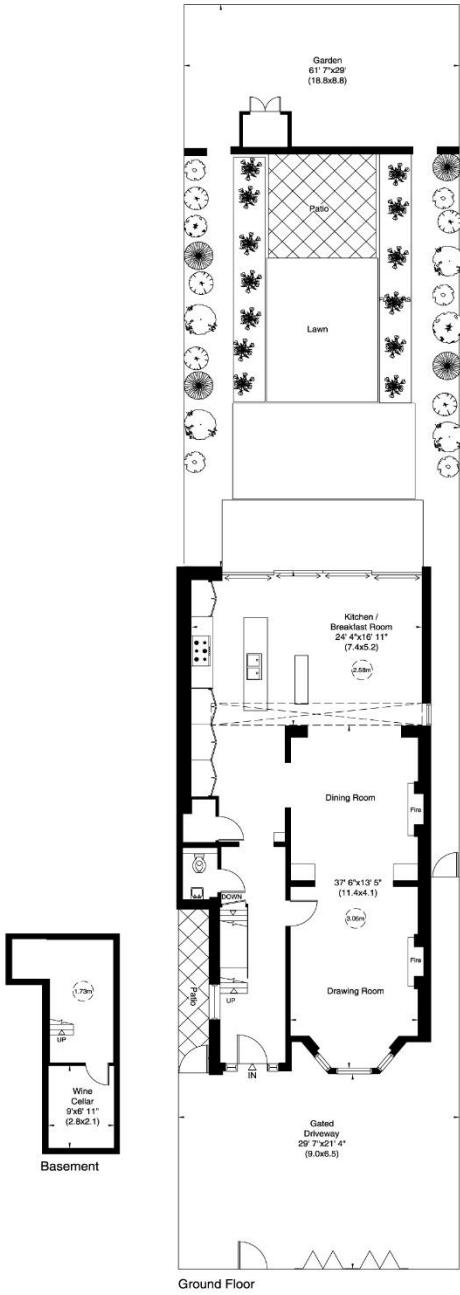




### Goldhurst Terrace, NW6

Gross internal area (approx.)  
357 Sq m (3845 Sq ft) Including Loft  
279 Sq m (3000 Sq ft) Excluding Loft  
For identification only, Not to Scale

Floor Plan by **capital group** 020 8571 7722



Not to scale, for guidance only and must not be relied upon as a statement of fact. All measurements and areas are approximate only (and have been prepared in accordance with the current edition of the RICS Code of Measuring Practice).